

**HCS
SAFETY**

Contact Details

Get in touch!

Unit 7 Chevron Business Park
Lime Kiln Lane
Holbury
Southampton
SO45 2QL

Phone: 02380 894695

Fax: 0870 762 1912

E-mail:
info@hcssafety.co.uk

Web: www.hcssafety.co.uk

*Friendly, professional,
down to earth
Health and safety advice***OPEN COURSES AT HCS IN DECEMBER/JANUARY****Site Supervisor Safety Training Scheme****5th & 6th January****Site Management Safety Training Scheme****4th, 11th, 18th, 25th Jan, 1st Feb****Health and Safety Awareness****18th January****SMSTS Refresher****12th & 13th January****Asbestos Awareness:****10th January****Manual Handling:****1st December****Work at Height & Scaffold Inspection****7th December**If you would like to book onto a course please call the office or e-mail Sam@hcssafety.co.uk **Don't forget: member clients receive 15% off ALL training booked with us!**CITB
construction skills**New on your website this month...**

As promised at the Annual Forum, our web guru Sara will be adding new useful documents to your Member Clients Area of the website each month. These will be in response to client requests and also as we gradually work our way through our existing documentation, re-formatting it and making sure it is up to date.

Please remember that the risk and COSHH Assessments will need to be made site specific, so if you need help just call us!**Risk Assessments:**Sheet Piling
Loading & Unloading
Window Fitting
Disc Cutters
Internal Demolition
Removal of existing windows
from suspected AIB
Electrical Testing**COSHH Assessments:**Galvafruid
Gypframe
Solder
Propane
Silicone Sealant
Soluble cutting oil
Welding rods x 2**Other:** Basic Incident Report form

An apology from Zoe:

Sam—I'm so sorry I forgot to tell all the clients at the Eastpoint Centre that you were the one who put our new brochure together.

So everybody: your new colour coded brochure was created by our very own Sam Cherry... Didn't she do well?!



Safety News

**HCS
SAFETY****November 2011****Scaffold Collapses onto Dorchester High Street**

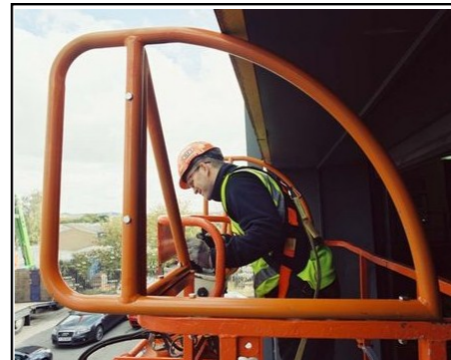
A reversing lorry hit a scaffold erected in High Street East in Dorchester on 11th November, causing it to collapse entirely.

Fortunately there was no one working on it at the time—we have insider information that one of the men who should have been on the scaffold at the time of the collapse was in fact round the corner buying some baked goods for breakfast.

The photo shown begs the question—was the scaffold tied to the building? It appears from the pictures that we have seen that it was not, although of course we await news from the HSE as to the truth in this.

It is worth considering our sites—do we have vehicles operating close to scaffolding? Have we done all we can to avoid this and to make the situation as safe as possible by ensuring good traffic management as well as properly designed and tied scaffolds?

Need advice? Phone 023 80 894695

Skanska requires crush barriers on cherry pickers

Responding to the tragic death of a cherry picker operator 3 years ago, Skanska have announced that from January 2012, crush structures will need to be fitted on all of their cherry pickers. All subcontractors must ensure that their equipment also meets this standard by April of 2012

Between 2006 and 2009, a total of 13 workers were killed while using powered access equipment, six of them using cherry pickers. They died either from crush injuries or from asphyxiation, often after falling onto the controls or being pinned against an overhead obstruction.

Dylan Roberts, director of health & safety for Skanska UK said: "Following the tragedy in 2008, I am very pleased that we have finally been able to take this step. We encourage the UK construction industry to follow suit."

Expect similar measures from other UK Construction Group members soon

Boris bashes dangerous construction vehicles

London's mayor has announced a review of construction industry HGVs.

It will examine the design, operation and driving of skip lorries, tipper trucks and cement mixers in the city.

According to the mayor's office, HGVs operated by the construction industry have been involved in at least seven of the eight incidents this year which have led to the deaths of cyclists.

Mayor Boris Johnson said he felt "bitterly sorry" for the loss of any cyclist or road user and was determined to do everything possible to make roads safer.

*Cycling is actively encouraged in London's busy streets and numbers of cyclists are expected to increase further as the Olympic Games draw nearer. Boris' challenge is to make the roads safe for all to use.***HCS Safety Pioneers new Refresher Course for Site Supervisors****#1**Your very own HCS Safety is the first training provider to run the new SSSTS Refresher course from the CITB. We will be running the first course in the UK on 7th December.

This one day course is designed to refresh those Supervisors who were among the first to gain a CITB Site Safety Plus certificate 5 years ago. Over the last 5 years we have trained 568 site supervisors in their responsibilities and look forward to seeing many more in the future.

CITB construction skills

Safety News

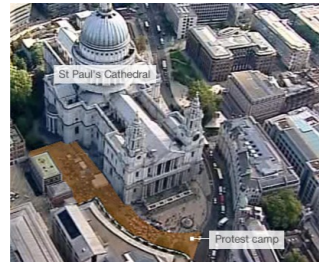
'Elf and Safety... or the real thing?' *A rant by Zoe*

Whenever I hear the phrase "for health and safety reasons", my ears prick up. So very often this hackneyed cliché is trotted out as a cover phrase so that actions don't have to be fully explained or taken responsibility for.

In the news recently we have had two major stories citing "health and safety reasons" and I thought I'd look a little deeper...

Number 1: Occupy London's protest outside St Paul's Cathedral.

As you will all no doubt be aware, St Pauls Cathedral was apparently **forced** to close its doors to worshippers for reasons of health and safety. There are big questions as to whether these concerns were justified, or just used as an excuse to cover a controversial decision that



nobody wanted to take real re-

sponsibility for. All of the photos (including aerial pics) show a clear access route into the Cathedral up the main steps, and even if this was a problem, surely there would have been a better way to solve it than closing an entire cathedral. There were also questions raised about hygiene, easily solved it seems by hiring some loos with washing facilities. **Verdict: Spurious**

Number 2: Relaxation of passport checks by UK border agency

The story goes that border checks were relaxed because of Health and Safety Concerns, implying that the face-

less health and safety people had let thousands of foreign criminals waltz in to the UK.

On closer examination, it seems that security controls were taking longer than usual because staff had been made redundant due to financial cutbacks. This meant that queues were building up and people were getting impatient, and possibly needing a drink and a visit to the loo. Cut backs cause delays doesn't make for such a good headline though does it? **Verdict: Bone idle journalism.**



2 Excavator drivers killed this month



A mini digger driver died after falling 100ft in his machine during demolition work on the former Cadbury's chocolate factory in Keynsham, near Bristol.

The worker died instantly and police officers and the Health and Safety Executive are investigating.

The accident happened just before 5.30pm on Wednesday 9th November but, due to the risk to rescuers of working in the dark, police and emergency services had to return to the scene on Thursday to recover the body of the man, who was believed to have been in his 20s or 30s and from Wales.

Avon and Somerset Constabulary spokesman Martin Dunscombe said: "Police were called to the Fry's Cadbury site at 5.30pm on Wednesday, to a sudden death at the location."

A spokeswoman for the HSE said that they were working with the police to examine the scene.

A second excavator driver died at a Northumberland quarry on Saturday when his machine fell into deep water.

The accident happened at Longhoughton Quarry, Longhoughton Road, Lesbury in Alnwick.

Northumbria police said the driver of an excavator went into a hole which

filled with water. The man was brought out and paramedics treated him at the scene.

He was taken to Wansbeck General Hospital by RAF Boulmer where he was pronounced dead later that afternoon.

Police and Health and Safety Executive are making enquiries into the incident.

The 58 year old Northumberland man who died has been named as David Hume, a very well known and well liked member of the community.



In the Courts

Community Service for Roofers for Injuring Office Worker



Two roofers have received suspended sentences and been ordered to do 280 hours of community service after a Derbyshire office worker was hit by a roll of roofing felt which crashed through the ceiling.

Kathleen Philipson of Allestree, Derby, was sitting at her desk at offices in Nottingham Road, Ripley, when the metre-long, 37kg roll fell through a roof light and came through the ceil-

ing, hitting her on the shoulder.

She was taken to hospital with injuries to her head, shoulder and left arm and was off work for two weeks following the incident on 22 September 2010.

A safety investigation found contractor Jason Lunt allowed re-felting work to start on the flat roof before adequate protection had been installed.

It meant that as Gregory Wright, a self-employed roofer contracted by Lunt, moved one of around six rolls of roof felt that were stood up on the roof, another one toppled over and fell through an unguarded roof light.

After the hearing, HSE inspector Lee Greatorex said: "Mrs Philipson was extremely lucky not to have suffered more severe injuries. This was a frightening experience for her, but it could

have been easily prevented had greater care been taken.

"Mr Lunt should have ensured an adequate system of work was in place and that roof lights were adequately protected before repair work began.

"As a roofer Mr Wright should have been aware the roof lights needed to be protected unless he had evidence they were capable of withstanding a substantial load.

"There were 22 sets of roof lights, only one of which had been covered or protected to prevent falls of people or materials through them during the re-felting job."

Jason Lunt, 41, of Bloxwich, in the West Midlands, pleaded guilty to safety breaches as did Gregory Wright, also 41, of Bloxwich.

University exposes staff and students to asbestos

Lincoln University has been fined for putting staff, students and contractors at risk of exposure to asbestos.

The failings came to light on 24 February 2010 when a lecturer became trapped in a room after a door lock broke. She enlisted the help of a colleague to release her and once freed, they noticed debris around the door handle.

They notified the university's health and

safety department which examined the door and others in the area, and discovered most were lined with asbestos insulating board (AIB), and that some were damaged.

The university notified the Health and Safety Executive (HSE), which carried out its own investigation. It was found that a number of areas across the university's estate had been subject to asbestos surveys over a number of years and many areas were found to contain asbestos-containing mate-

rials or even asbestos debris, yet no remedial action had been taken.

The university pleaded guilty at Lincoln Magistrates' Court. They were fined £10,000 and ordered to pay £12,759 costs.



Fireball at Football Ground

Stephen Rowley, 43, from Macclesfield, suffered burns to his face, neck and both arms at Egerton Youth Club on Mereheath Lane in Knutsford on 18 September 2009.



His employer, Paul Leonard had been hired to repair a septic tank, and had arranged for a trench to be dug out to gain access.

Rowley was working in the trench removing damaged pipework, when the digger operator struck an underground pipe containing liquid petroleum gas (LPG). Sparks from the power tool set alight the leaking gas and created a fireball in the trench. Rowley's clothes were set on fire and he had to struggle out of the trench and then roll in the grass to put out the flames.

The court was told Leonard had left the workers unsupervised when the gas pipe was struck. He also failed to

provide trench supports and there was no means of access, such as a ladder, to get in and out of the trench.

Leonard was found guilty of a breach of the CDM Regulations

Speaking after the hearing, the investigating inspector at HSE, Catherine Willars, said: "Stephen Rowley could easily have been killed in the gas explosion. Luckily he has now been able to return to work, following lengthy treatment as a result of his injuries.